

Project Info



01 / 12 / 13



CC5™ Bulk Rolls



810m²



Vertical layers



Brockman 4 Mine site,
Western Australia



ROCK Australia



CC5™ used to line a
slope at a Run of Mine
(ROM)

RioTinto



Completed installation at the Brockman 4 mine site

In December 2013, Concrete Canvas® GCCM* was used to line a slope at a Run of Mine (ROM)** situated in the Brockman 4 mine site, Western Australia. The customer's requirement was to prevent surface water from penetrating the slope, causing instability, as well as providing erosion control and weed suppression. CC was specified due to the speed and ease of installation as well as the most cost-effective solution compared to shotcrete.

Large rocks and vegetation were removed from the slope before the surface was levelled. Bulk rolls of 5mm thick CC (CC5™) were unrolled down the slope using a crane and spreader beam, then the overlaps were hydrated before being sealed and screwed. Ground pegs were used to fix the CC5™ to the substrate along one edge and a grouted joint along the other, creating a water impermeable seal between the CC5™ and the retaining wall. At the crest of the slope, a transverse layer of CC5™ was used to overlap the vertical layers, then anchor trench and fixed with ground pegs. A water cart was used for hydration.

In total 810m² of CC5™ were installed in 3 days by a team of 3. The bulk rolls enabled a fast, easy and cost-effective install under very high temperatures of up to 43°C.

*Geosynthetic Cementitious Composite Mat

** Mined ore of a size that can be processed without further crushing

*Geosynthetic Cementitious Composite Mat





The slope prior to works



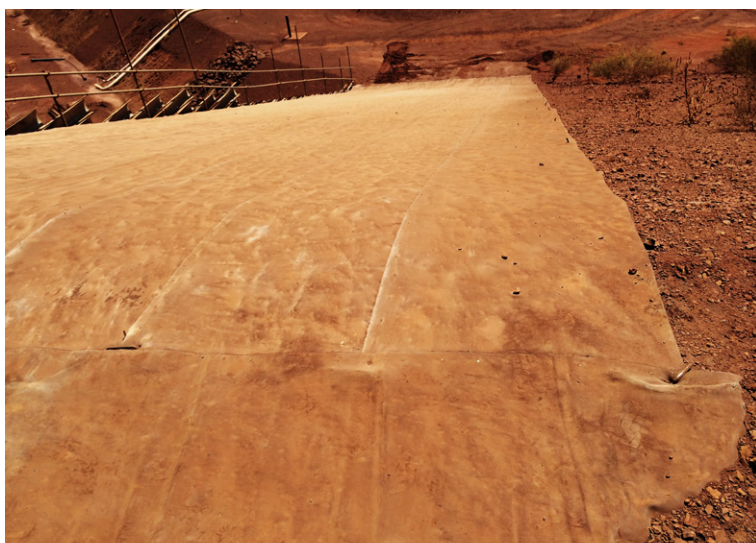
The slope following preparation works



The CC5 was laid vertically down the length of the slope



Concrete was poured along the edge adjacent to the wall



The other edge was secured with pegs & captured in an anchor trench



The completed installation, from the bottom of the slope